
Comfort-Cire®

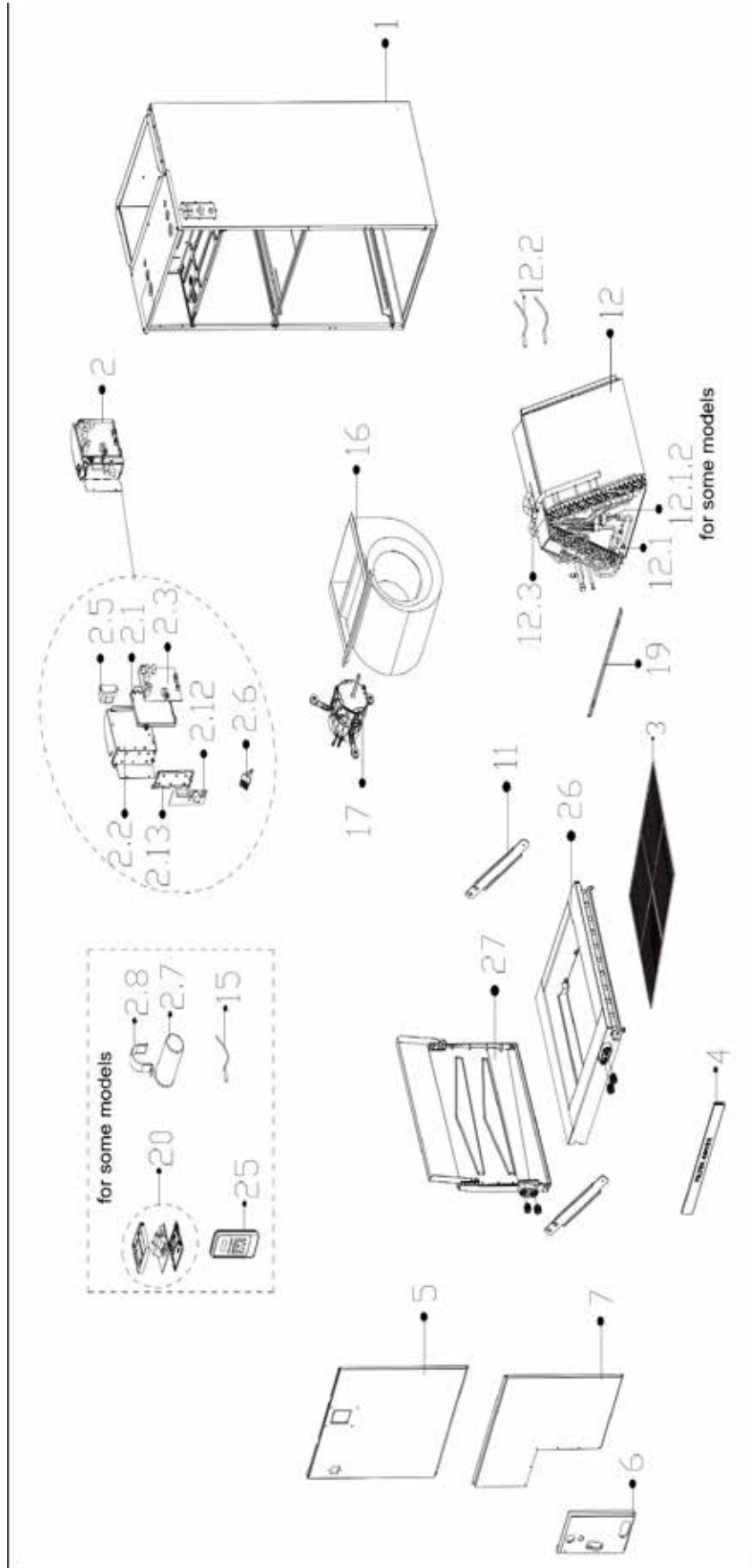
Century®

PARTS LIST

**Multi-Position Air Handler
Ducted Units**

B-VMH18AV-1

EXPLODED VIEW



REPLACEMENT PARTS

Location	Part Name	Quantity	Part No.
1	Chassis assembly	1	12223100000662
2	Duct electronic control box subassembly	1	17223000008202
2.1	Installation plate for main board	1	12123000000920
2.2	E-part box Subassembly	1	12223100000631
2.3	Duct main control board subassembly	1	17123000008577
2.5	Linear Transformer	1	11203103000087
2.6	Wire joint	1	17400401000097
2.12	Data transfer module control board printed board subassembly	1	17122000055387
2.13	Bracket of main control board	1	12120300000522
3	Air filter	1	12223000014170
4	Dust mesh	1	12223100000654
5	Upper Cover Plate assembly	1	12223100000664
6	Clamp for connecting pipe assembly	1	12223100000711
7	Under Cover Plate assembly	1	12223100000666
11	Bracket for Water collector	1	12223100000663
12	Evaporator assembly	1	15823100000687
12.1	Evaporator inlet pipe subassembly	1	15123000013347
12.2	Pipe Temperature Sensor	1	11201007003441
12.3	Evaporator outlet pipe subassembly	1	15123000013352
15	Room Temperature Sensor	1	11201007003563
16	Fan ass'y	1	12200101000018
17	Brushless DC Motor	1	11002015013969
19	Clamp for Cover Plate assembly	1	12223100000665
20	Wired controller	1	17317100006495
25	Remote controller	1	17317000A64687
26	Main Water collector assembly	1	12123100000025
27	Deputy Water collector assembly	1	12123100000026

Due to ongoing product improvements, specifications and dimensions are subject to change and correction without notice or incurring obligations. Determining the application and suitability for use of any product is the responsibility of the installer. Additionally, the installer is responsible for verifying dimensional data on the actual product prior to beginning any installation preparations.

Incentive and rebate programs have precise requirements as to product performance and certification. All products meet applicable regulations in effect on date of manufacture; however, certifications are not necessarily granted for the life of a product. Therefore, it is the responsibility of the applicant to determine whether a specific model qualifies for these incentive/rebate programs.

Comfort-Aire®  **Century**®